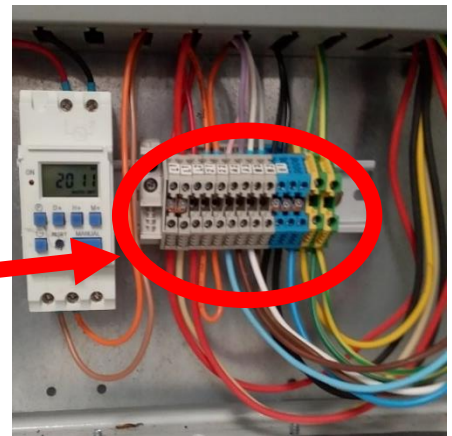


Electrical risks related to exposed live electrical parts within Gas Regulator Switch Boxes

Hazard

In some school locations, the Gas Regulator Switch Box has a gas timer co-located behind a panel with exposed live electrical parts.

Accessing the Gas Regulator Switch Box to restart gas supply after a malfunction poses significant risk of **electric shock** due to these adjacent exposed live electrical parts.



What are schools to do?

- Department employees are **NOT** to open Gas Regulator Switch Box panels at any time.
- Principal (or delegate) must locate, secure and eliminate staff access to all Gas Regulator Switch Box panel keys.
- Gas Regulator Switch Box panel keys to be labelled with '*not for departmental use - authorised persons use only*'.



If an employee identifies a potential malfunction which prevents the gas supply:

- Employee to isolate and turn off all control valves.
- If gas isolation is not possible, evacuate and **call 000**.
- Employees must not attempt to investigate electrical system failures themselves.
- Consult school Business Manager or delegate to engage QBuild or licenced contractor to investigate the malfunction.
- Only contractors who are authorised competent personnel are permitted to gain access to Gas Regulator Switch Box panels.
- Inform all staff that a gas system failure has occurred.
- Record hazard or incident in MyHR WHS



Further information

Gas Regulator Switch Boxes with enclosed live electrical parts are to be identified and labelled by competent persons.



If you have any concerns or are unsure if you have one of these panels on site contact your Regional Infrastructure Team.

Review/relocation of the gas supply controls in schools is being investigated to eliminate this risk.